

AB PROFIT HOGA AUR BHI ZYAADA



**TATA
PRIMA
5530.S**

BS6 P2
Phase 2 Ready

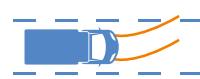
- ✓ Safer
- 💡 Smarter
- 🌱 Greener
- ⚙️ Better Fuel Efficiency
- 💰 Lower Total Cost of Ownership

**TATA TRUCKS
DESH KE TRUCKS**

Technical Specifications

MODEL	PRIMA 5530.S 6x4
GROSS VEHICLE WEIGHT	55 000 kg
ENGINE	Cummins 6.7 L 300 HP OBD-II
ENGINE CAPACITY	6 702 cc
MAXIMUM POWER	224 kW @ 2 300 r/min
MAXIMUM TORQUE	1100 Nm @ 1100 - 1700 r/min
CLUTCH	430 mm Single plate dry frictional
TRANSMISSION	TATA G1150 - 9 SPEED DD
FRONT AXLE	Heavy duty forged I beam Reverse Elliot type
REAR AXLE	RA 109 SRT
FRONT SUSPENSION	Parabolic leaf spring with rubber bush
REAR SUSPENSION	Bell crank / Bogie suspension
CAB/COWL	Prima Sleeper Cab
TYRES	295/90R20
VENTILATION	AC
FUEL TANK CAPACITY	365 L / 365 L +192 L Twin Fuel Tank
WHEELBASE OPTIONS	39 WB
DECK LENGTH OPTIONS	NA
GROUND CLEARANCE	Front: 290 mm, Rear: 226 mm
CONFIGURATION	6 x 4
NO OF TYRES	10 Tyres

Key Features & Benefits



Lane Departure
Warning System



Collision Mitigation
System



Driver Monitoring
System



Fuel Monitoring
System



Firmware
Over The Air



Cruise Control



Fleetedge
Telematics

Applications



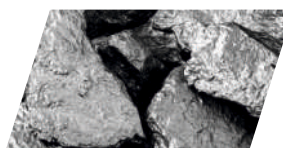
Cement Bags



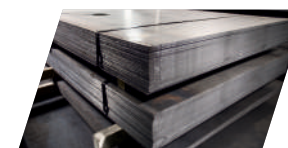
Industrial Goods



Tanker



Ore & Minerals



Steel



Coal



TATA MOTORS SAMPOORNA SEVA
TATA WARRANTY | TATA GENUINE PARTS
TATA MOTORS FLEET EDGE | TATA SURAKSHA
TATA DELIGHT | TATA PROLIFE
TATA OK | TATA KAVACH
TATA ALERT
TOLL-FREE 18 00 20 97 979

TATA MOTORS

To know more, visit your nearest Tata Motors dealership

www.tatatrucks.tatamotors.com

📞 18 00 20 97 979 Follow us on